



INFOBATT 2007
Battery Recycling
October 23, 2007

Lead-acid battery recycling – a Positive Charge to the Environment



Lead–acid Battery Recycling

- Recycling rate – 97% per BCI Data
- Sustainable Development of sector—
impacted by component recyclability
and recycling rate

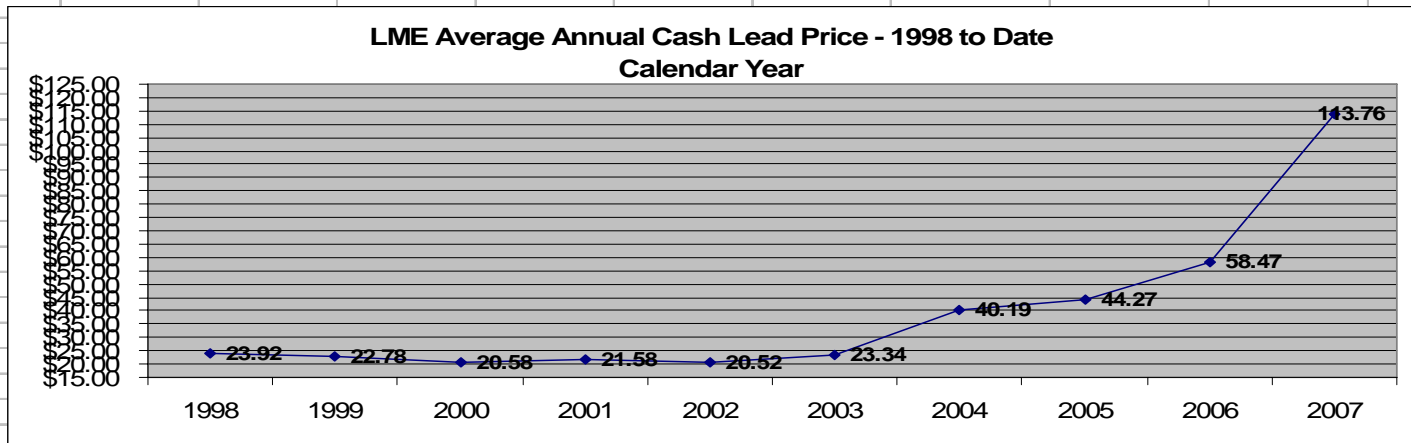


LONDON METAL EXCHANGE MONTHLY AVERAGE CASH LEAD PRICE in US \$ per 100 lbs

Month/Year	1998	1999	2000	2001	2002	2003	2004	2005	2006	2007
January	\$ 24.09	\$ 22.33	\$ 21.40	\$ 21.66	\$ 23.25	\$ 20.15	\$ 34.38	\$ 43.20	\$ 56.96	\$ 75.09
February	\$ 23.41	\$ 23.28	\$ 20.50	\$ 22.75	\$ 21.76	\$ 21.56	\$ 40.28	\$ 44.32	\$ 57.89	\$ 80.67
March	\$ 25.37	\$ 23.02	\$ 20.00	\$ 22.59	\$ 21.76	\$ 20.70	\$ 40.19	\$ 45.62	\$ 54.07	\$ 86.77
April	\$ 25.37	\$ 23.54	\$ 19.10	\$ 21.64	\$ 21.41	\$ 19.82	\$ 34.17	\$ 44.69	\$ 53.07	\$ 90.76
May	\$ 24.63	\$ 24.54	\$ 18.69	\$ 21.15	\$ 20.48	\$ 21.01	\$ 36.69	\$ 44.80	\$ 52.90	\$ 95.24
June	\$ 23.96	\$ 22.49	\$ 19.02	\$ 20.13	\$ 19.94	\$ 21.21	\$ 39.45	\$ 44.71	\$ 43.70	\$ 110.005
July	\$ 24.75	\$ 22.47	\$ 20.49	\$ 20.92	\$ 20.24	\$ 23.33	\$ 42.59	\$ 38.74	\$ 47.73	\$ 139.831
August	\$ 24.43	\$ 22.80	\$ 21.44	\$ 21.89	\$ 19.18	\$ 22.51	\$ 41.77	\$ 40.21	\$ 53.22	\$ 141.963
September	\$ 23.58	\$ 22.99	\$ 22.08	\$ 21.08	\$ 19.09	\$ 23.63	\$ 42.41	\$ 42.29	\$ 60.85	\$ 146.283
October	\$ 22.34	\$ 22.53	\$ 22.03	\$ 21.21	\$ 18.95	\$ 26.62	\$ 42.27	\$ 45.55	\$ 69.43	\$ 171.000
November	\$ 22.40	\$ 21.68	\$ 21.21	\$ 22.04	\$ 20.04	\$ 28.20	\$ 43.87	\$ 46.18	\$ 73.67	
December	\$ 22.72	\$ 21.72	\$ 20.95	\$ 21.90	\$ 20.10	\$ 31.37	\$ 44.20	\$ 50.96	\$ 78.21	

Month/Year	1998	1999	2000	2001	2002	2003	2004	2005	2006	2007
	\$ 23.92	\$ 22.78	\$ 20.58	\$ 21.58	\$ 20.52	\$ 23.34	\$ 40.19	\$ 44.27	\$ 58.47	\$ 113.76

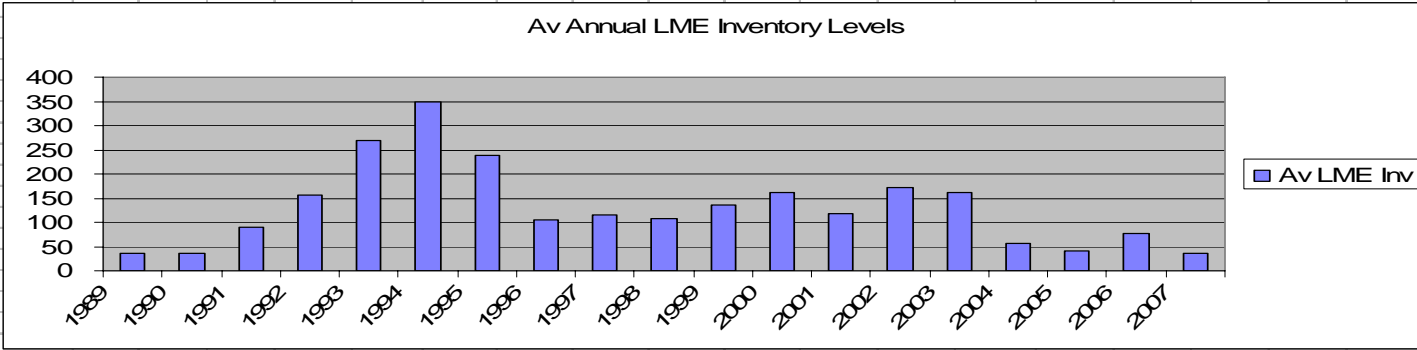
Source: Platts Metals Week



London Metal Exchange

Month-end LME Lead Inventory; in '000's MT

	1989	1990	1991	1992	1993	1994	1995	1996	1997	1998	1999	2000	2001	2002	2003	2004	2005	2006	2007
JAN	58	22	65	130	235	323	328	111	112	109	105	187	127	135	179	88	35	60	39
FEB	52	13	74	134	234	331	311	101	110	107	108	192	143	143	178	76	34	78	32
MARCH	42	27	71	133	246	337	293	91	108	96	105	198	140	148	177	74	33	89	33
APRIL	37	33	73	135	250	343	280	89	114	107	105	207	138	153	181	70	32	99	42
MAY	34	34	76	137	258	353	262	89	119	107	119	200	132	175	174	54	30	111	47
JUNE	35	43	80	143	262	355	244	94	116	105	133	179	108	178	172	45	42	111	45
JULY	32	42	86	149	273	356	235	98	120	108	138	145	103	195	165	37	65	102	38
AUGUST	27	40	89	155	279	365	225	111	118	115	137	121	102	196	160	36	54	79	25
SEPT	32	43	96	171	288	370	207	118	121	113	153	102	104	193	156	53	40	60	22
OCT	28	44	114	188	299	370	194	117	116	111	171	141	104	184	151	50	49	47	
NOV	26	45	122	200	300	358	155	118	117	105	175	136	107	180	134	41	41	44	
DEC	25	57	126	213	304	338	132	119	112	108	177	131	97	178	110	41	43	41	
Average	36	37	89	157	269	350	239	105	115	108	136	162	117	172	161	55	42	77	36
Av LME Inv Year	1989	1990	1991	1992	1993	1994	1995	1996	1997	1998	1999	2000	2001	2002	2003	2004	2005	2006	2007



World lead consumption increasing approx 4% per year

Markets - Lead consumption

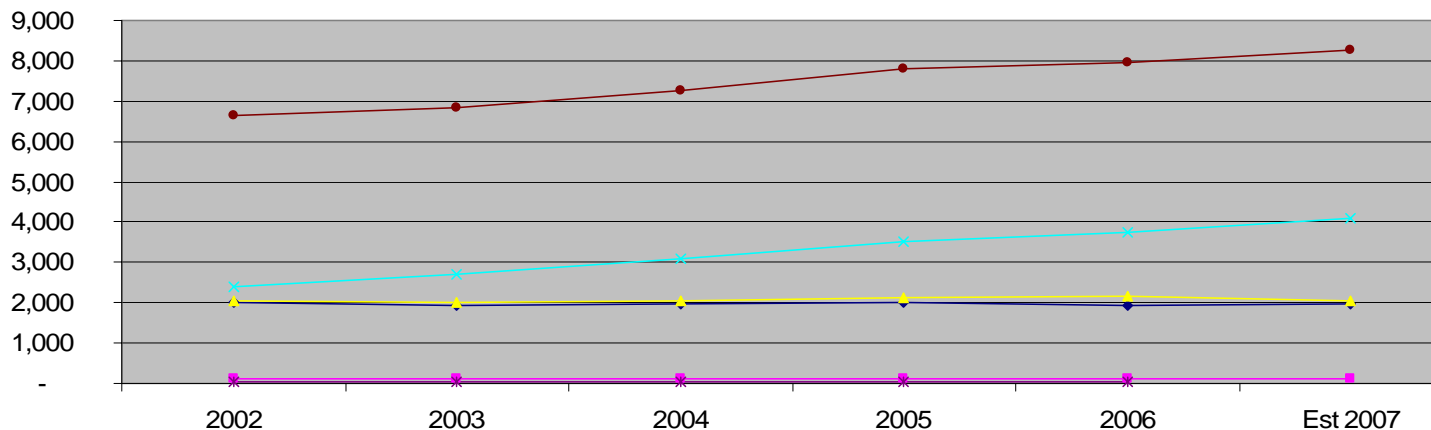
World - Annual Lead Consumption data in 000's mt

per ILZSG data Sept 2007 publication

Date: October 2007

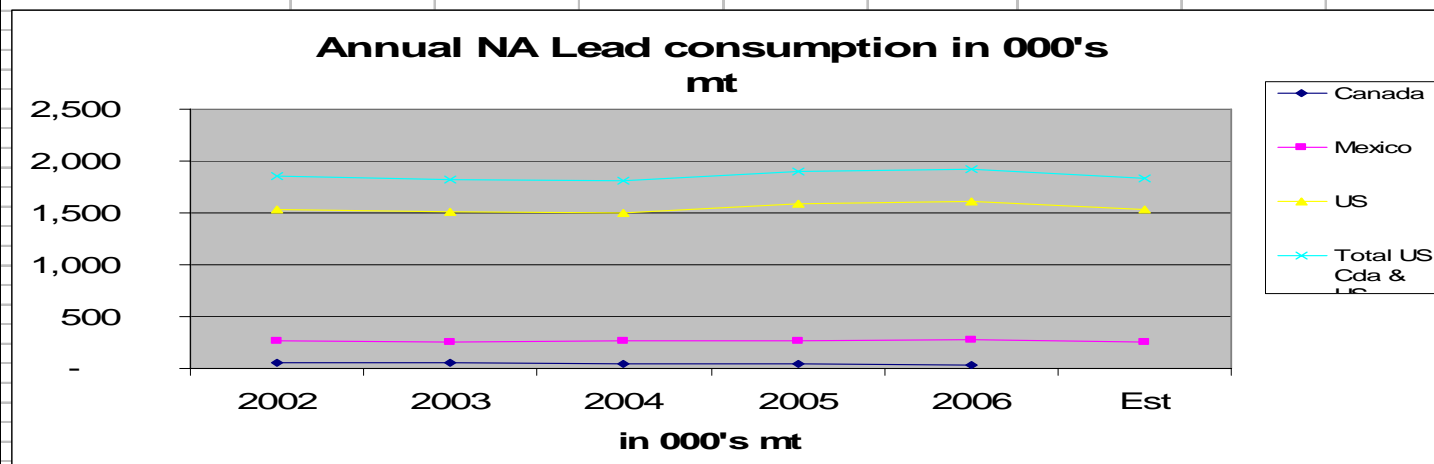
	2002	2003	2004	2005	2006	Est 2007
Europe	2,027	1,932	1,984	2,002	1,930	1,968
Africa	98	116	112	113	111	132
America	2,066	2,022	2,041	2,132	2,160	2,052
Asia	2,408	2,711	3,105	3,533	3,746	4,095
Oceania	42	40	29	29	29	29
World Total	6,641	6,821	7,271	7,809	7,976	8,276
An change in mt		180	450	538	167	300
An change - %		3%	7%	7%	2%	4%

World Lead consumption in 000's mt



North American lead consumption – relatively stable

	2002	2003	2004	2005	2006	Est 2007
Canada	58	51	52	42	41	36
Mexico	267	259	262	267	273	258
US	1,536	1,513	1,502	1,586	1,608	1,534
Total US Cda & US	1,861	1,823	1,816	1,895	1,922	1,828
An change in mt		38 -	7 -	79	27	94 -
An change - %		-2%	0%	4%	1%	-5%



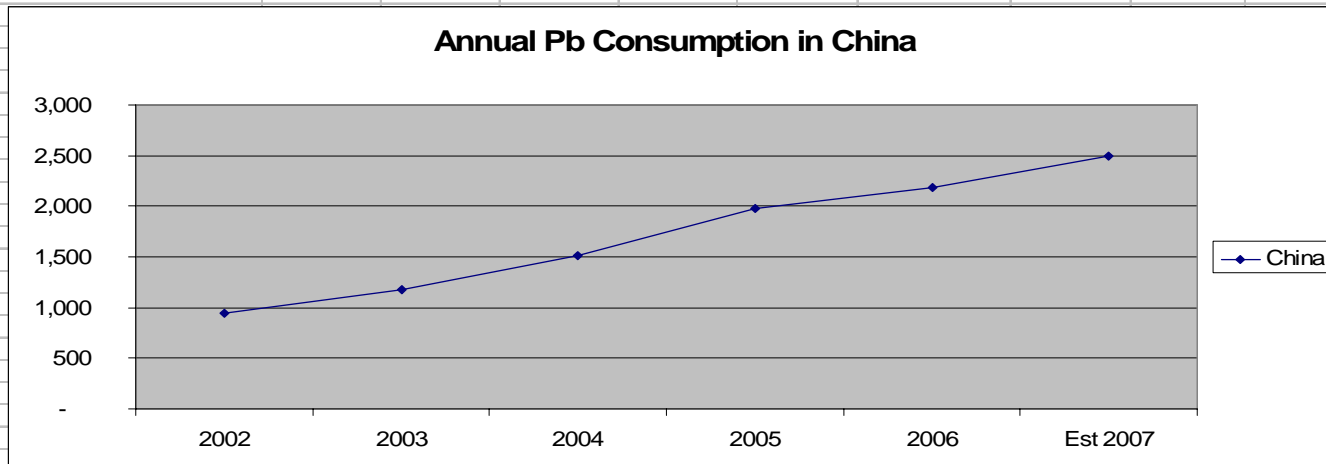
Lead consumption in China

China

Annual Lead Consumption data in 000's mt
per ILZSG data

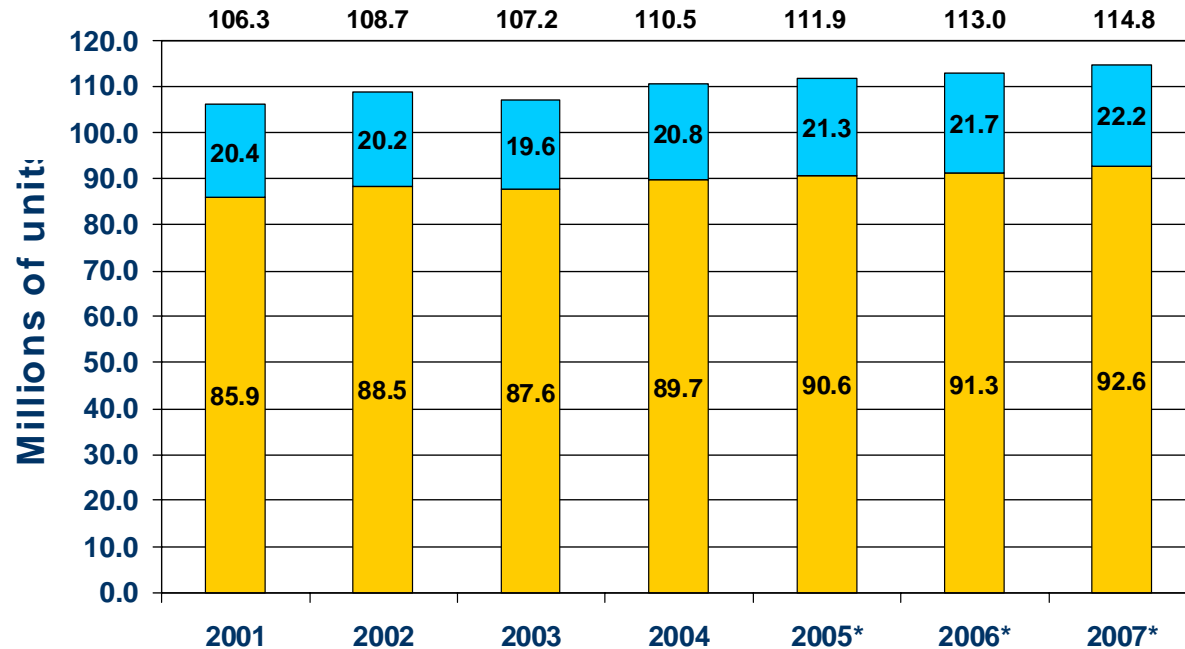
Date: August 2006

	2001	2002	2003	2004	2005	2006	Est 2007
China	700	950	1,183	1,510	1,973	2,179	2,500
An change in mt		250	233	327	463	206	321
An change - %		36%	25%	28%	31%	10%	15%



The Recycling Mine..

North American Battery Forecast



*Forecast does not include motorcycle batteries

